

Lantern

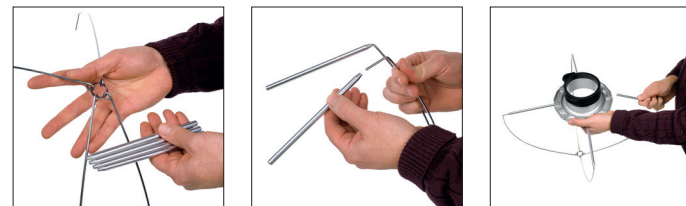
Lantern 1,7' flat manual

1. PARTS



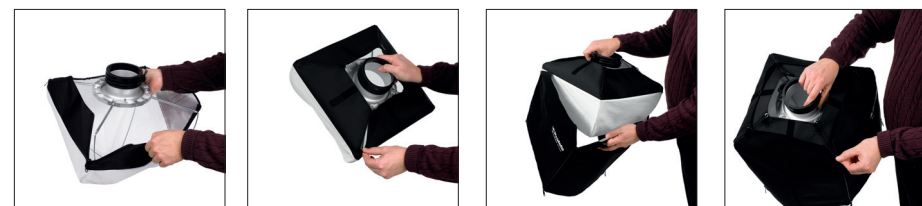
	Product no	Description
①	46 40 89	Rod A for HR Lantern 1.7'
②	46 40 90	Rod B 4-in-1 set for HR Lantern 1.7'
③	46 41 71	Translucent body for HR Lantern 1.7'
④	46 41 72	Black cover for HR Lantern 1.7'

2. INSERTING RODS INTO SPEEDRING



- Connect each rod B and rod A.
- Insert the other end of rod B into a hole in the speedring.
- The second rod should be inserted into the opposite of the first. The third rod goes in diagonal position and the last one in the opposite of the third.
- Skeleton of Pancake is completed.

3. ATTACHING BODY, COVER AND THEN COMPLETED



- Cover the body over the skeleton.
- Cover goes on top of the body.
- Zip it up as much as needed.
- Each four side of cover can be open, rolled up and fixed using attached Velcro.

WARNING

- Maximum light wattage for this product is 500W
- Be aware that the road and speed ring will get hot and please take precaution when touching these parts

This product can be modified for better quality and function without prior notice

Lantern

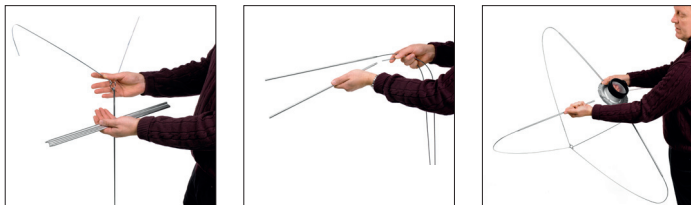
Lantern 3' & 4' flat manual

1. PARTS



	Product no	Description
①	46 40 95	Rod A for HR Lantern 3'
②	46 40 96	Rod B 4-in-1 set for HR Lantern 3'
③	46 41 73	Translucent body for HR Lantern 3'
④	46 41 74	Black cover for HR Lantern 3'
⑤	46 40 97	Rod A for HR Lantern 4'
⑥	46 40 98	Rod B 4-in-1 set for HR Lantern 4'
⑦	46 41 75	Translucent body for HR Lantern 4'
⑧	46 41 76	Black cover for HR Lantern 4'

2. INSERTING RODS INTO SPEEDRING



- Connect each rod B and rod A.
- Insert the other end of rod B into a hole in the speedring.
- The second rod should be inserted into the opposite of the first.
The third rod goes in diagonal position and the last one in the opposite of the third.
- Skeleton of Pancake is completed.

3. ATTACHING BODY, COVER AND THEN COMPLETED



- Cover the body over the skeleton.
- It might be necessary to remove one rod to be able to fit the body.
- Cover goes on top of the body.
- Zip it up as much as needed.
- Each four side of cover can be open, rolled up and fixed using attached Velcro.

This product can be modified for better quality and function without prior notice