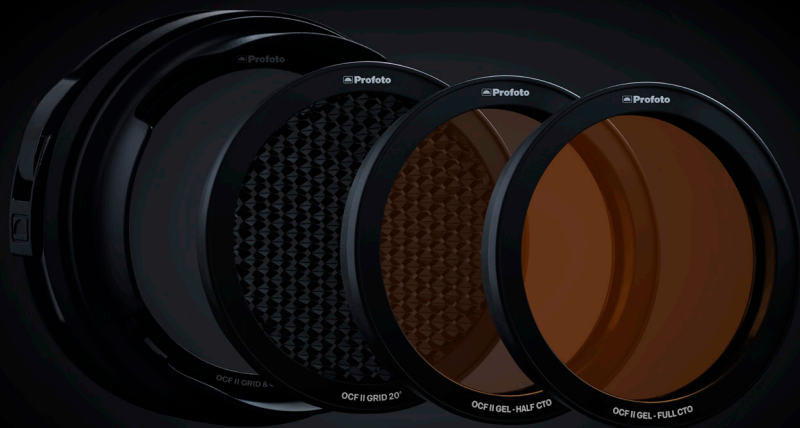


OCF II Light Shaping Tools Mounting Instructions



OCF II Light Shaping Tools

OCF II Light Shaping Tools are designed for mobility and ease of use with your Profoto Off-Camera Flash.

By flipping through these pages you'll quickly learn how to combine the OCF II light shaping tools and get ready to start exploring and shaping light. We look forward to sharing your images!

**Get started with
your new OCF II Light
Shaping Tools**



The **OCF II Grid & Gel Holder** mounts directly onto any Profoto OCF light.

- 1** Open the clasp on the rubber collar and gently push the holder onto your light.
- 2** Fasten it securely by locking the clasp.



- 3 Simply click any magnetic **OCF II Gel** or **OCF II Grid** into the holder.
- 4 When stacking gels and grids, stack the grid on top for the best effect.



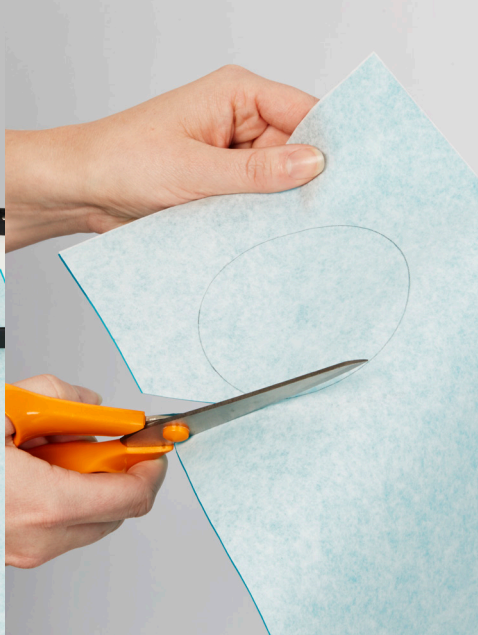
The **OCF II Snoot** mounts directly onto your Profoto OCF light in the same way as the OCF II Grid & Gel Holder. You can also combine it with OCF II Gels by mounting it on top of the OCF II Grid & Gel Holder.



The snout is soft and easy to fold for compact storage in your bag. And when it is time to use it you can unfold it in a second.



The **OCF II Barndoor** mounts directly onto your Profoto OCF light the same way as the OCF II Grid & Gel Holder. You can also combine it with OCF II Gels by clicking the magnetic Gel directly into the OCF II Barndoor.



With the **OCF II Gel Ring**, you can easily attach a standard gel sheet to your OCF II Grid & Gel Holder.

- 1 Remove the inner ring on the OCF II Gel Ring and use it as a cutting template for your gel sheet.



- 2** Mark the outer diameter, cut out and place your cut gel in between the inner and outer attachment rings.
- 3** Your Gel Ring is now ready to be used and can be mounted in the same way as the OCF II Gels.

Attention!

Due to heat restrictions, the OCF II Light Shaping Tools are only recommended for selected Profoto Off-Camera Flashes. Always respect the recommendations for max flash rating and modelling/continuous light.

Recommended for: Profoto Off-Camera Flashes

Max flash rating: 500 Ws

Modelling/continuous light: LED only

For more information and inspiration:
profoto.com/offcameraflash